

White Lake Wetlands Conservation Area Comprehensive Master Plan

Overview of White Lake Wetlands Conservation Area (WLWCA)

Location & Size

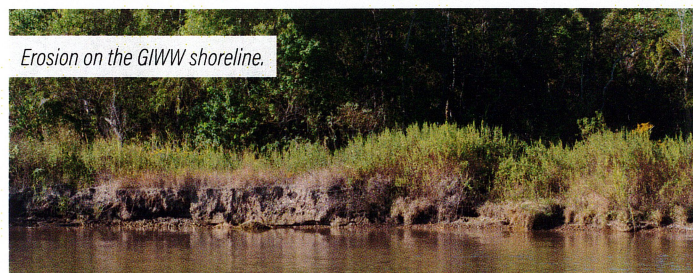
72,000 acres of marsh and agricultural lands in Vermilion Parish, Louisiana

Primary Goal

Sustain wetland wildlife habitats, especially for waterfowl

Issues or Needs

Restore habitats, protect shorelines, stabilize levee systems, and repair infrastructure



Ownership & Management

- Donated by British Petroleum (BP) to the state in 2002
- Managed by Louisiana Department of Wildlife and Fisheries (LDWF)
- LDWF leases parts of the land to farmers, ranchers, and hunters depending on land suitability

Challenges

- Land adjacent to Gulf Intracoastal Waterway (GIWW) is at risk of flooding from breaches
- Internal impoundment levees are degraded reducing ability to manage habitat
- White Lake shoreline erosion threatens water management levees on the south side of the property
- Aging lodge, island facilities, levees, and other infrastructure require significant repairs and upgrades after years of wear and limited funding



Master Plan Development

- Collaborative effort between LDWF and CPRA
- Plan due October 2025
- Will include priority projects and cost estimates

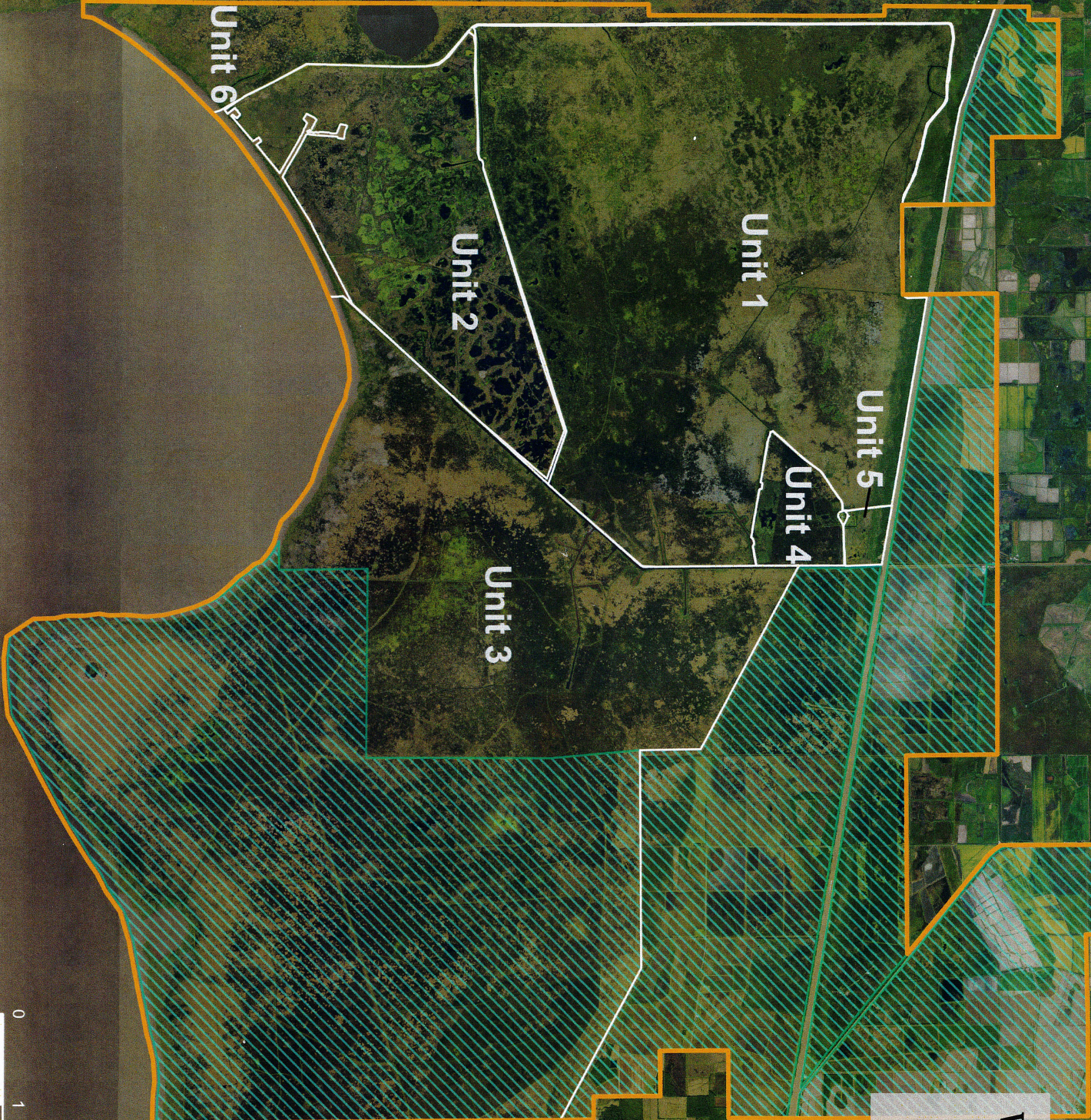
Priority Projects

1. **GIWW Shoreline Protection Project:** More than 20 miles of rip rap rock breakwaters along the GIWW to protect the shoreline from erosion.
2. **WLWCA Unit 2 Impoundment Levee Stabilization Project:** Levee repair is needed to support habitat management and protect from storm surge erosion.
3. **White Lake North Shoreline Protection Project:** Seven miles of rip rap rock breakwaters along the north shoreline to protect 61,000 acres of marsh from erosion.



WHITE LAKE WETLANDS CONSERVATION AREA

Location: Department of Wildlife and Fisheries



- Legend**
-  Leased Land
 -  Management Units
 -  WLWCA